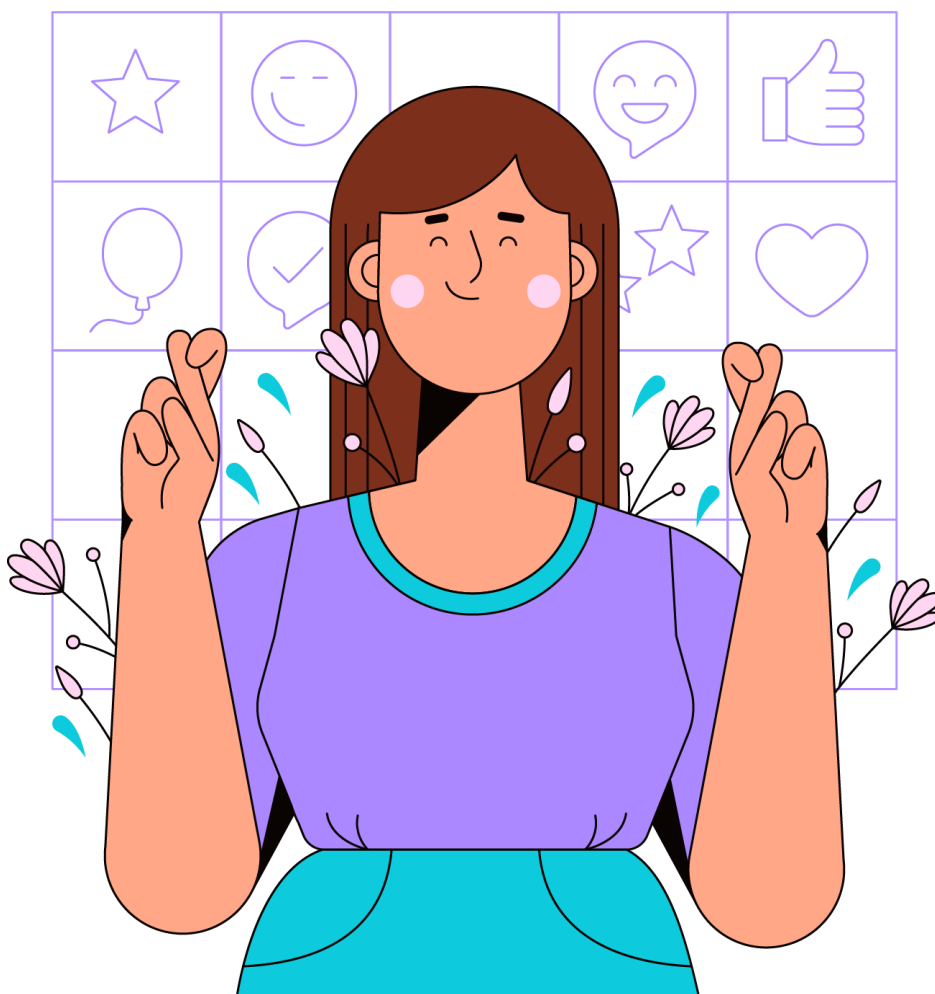


## Strategy Selection Matrix



## Strategy Selection Matrix

Using the Strategy Selection Matrix, evaluate each approach based on your survey results:

Strategy	Good fit for my community?	Resources needed	Timeline
<b>Text messaging</b>	Yes - 90% have phones	Text platform subscription	Can start next week
<b>Family learning events</b>	Maybe - need childcare	Space, materials, food	6 weeks to plan
<b>Social media</b>	Yes - many use Facebook	Someone to post 3x/week	Start in 2 weeks
<b>Multi-platform</b>	Yes - families vary	Time to maintain all	Ongoing

Pick your top 3 strategies. Be realistic. Start with what you can actually maintain, not what sounds ideal



